



ENGEL Is 'electrified' At NPE2009

YORK, Pa. – June 23, 2009 – How can injection molders achieve maximum output while minimizing production costs? Which new technologies will allow processors to differentiate from the competition and maintain a market lead? What trends will the future bring to the plastics industry? Find the answer to these questions and more at booth #S24000 at NPE2009, where ENGEL presents the latest all electric injection molding machine technology, innovative exhibits and advanced processing technologies.

ENGEL, a world leader in the design and manufacture of injection molding machines and part-handling automation systems, has answered the interest and demand in energy efficient, all-electric injection molding machines with a series of innovative new product developments. ENGEL is showcasing the latest technology for reduced operating costs and minimized carbon emissions. The NPE2009 has been chosen to introduce several new product developments for the first time globally:

- The new duo pico with ecodrive, the mid-size 2-platen injection molding machine with the smallest footprint, fast cycle time and minimum energy consumption, equipped with a servo hydraulic system and electric screw drive, reducing energy consumption by 45 to 60% over comparable machines. The duo pico will be molding crates and is equipped with an integrated ENGEL ERC servo robot.

-more-



- The integrated Energy Calculator, a new software feature in ENGEL's CC200 control system which lets machine operators choose the most energy efficient motion parameters, without sacrificing output and performance. Using the energy calculator in setting up the machine is said to reduce energy consumption between 15 and 25%.
- A clean room-compatible, integrated medical device manufacturing cell, molding PP pipette tips on a 110 ton all electric e-max machine with an Xaloy nXheat™ induction heated barrel for maximum energy saving.

Additionally, ENGEL is showcasing several innovative injection molding cells:

- A 60 ton all-electric ENGEL e-motion combi machine is part of an integrated system that will be molding a multi-component cell phone holder, demonstrating ENGEL's global leadership position in multi-component molding technology. The part is molded with PP and TPE, and utilizes an integrated Kuku KR5 articulating robot for part transfer and removal.
- The new ENGEL e-max 110 US all-electric machine will be molding a 16-cavity Liquid Silicone Rubber (LSR) application. This machine is ideal for LSR molding as the longer toggle clamp stroke offers precise positioning for venting and coining applications and the servo-drive on the ejector strokes offers the precise speed, pressure and position control required for the demolding of delicate silicone parts.
- The all-electric e-motion 420 T with a fast cycling 72-cavity closure mold. This application was developed to meet the demand in energy conserving all-electric machine technology for the packaging industry.

-more



- The largest machine on display will be the ENGEL duo 1000 ton equipped with an ENGEL ERC 63 servo robot. This system will demonstrate, in partnership with Trexel, Inc., the MuCell® Core Back Expansion Molding technology, which provides a reduction in part density, with five times the increase in part stiffness. The ENGEL duo is molding an automotive door panel to demonstrate weight savings technologies for automotive and other industry components.

ENGEL will also demonstrate its “e-factory” automation system, which lets processors collect and analyze shop floor production data in their ERP system. The e-factory product offering has been extended to integrate non-ENGEL machines into the system.

Visit the ENGEL booth at NPE2009, or online at www.engelglobal.com/na/npe09 and see why ENGEL is “electrified.”

-30-

ENGEL North America

From facilities in the United States, Canada and Mexico, ENGEL North America provides its customers a single source for design and manufacture of injection molding machines for thermoplastics and elastomers, a full range of plastics processing technology modules and a full scope of automation solutions. With eight production plants in Europe, North America and Asia (China, Korea), subsidiaries in 17 countries and representatives in over 70 countries, ENGEL North America provides its customers the global support they need to compete and succeed with new technologies and leading-edge production systems. For more information, visit www.engelglobal.com/na.

Contacts:

Joann Cathcart, Marketing Communications Coordinator, ENGEL North America
545 Elmira Road, Guelph, Ontario, Canada, N1K 1C2, Tel.: 519-836-0220,
fax: 519-836-7116 Email: joann.cathcart@engelglobal.com

Gerd Liebig, Group Marketing Director, ENGEL AUSTRIA GmbH
Ludwig-Engel-Strasse 1, A-4311 Schwertberg/Austria, Tel.: 011 43 50 6200,
Fax: 011 43 50 620 3009
Email: gerd.liebig@engel.at

Julie Pompa, APR, The Lauerer Markin Group
1700 Woodlands Dr., Maumee, Ohio 43537 USA Tel.: 1.419.887.6827, Fax: 1.419.893.1050
Email: juliep@LMGnet.com

Press release



ENGEL duo 1000 US with MuCell_Core back.jpg

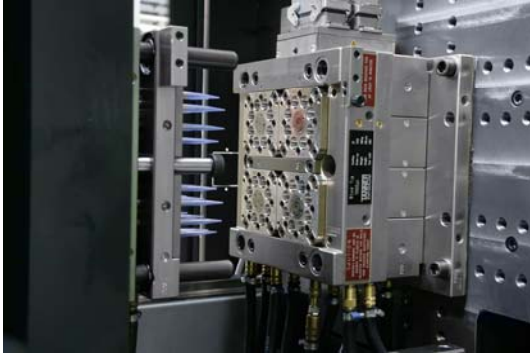


duo 500pico with ecodrive.jpg



ENGEL emotion 420 T US.jpg

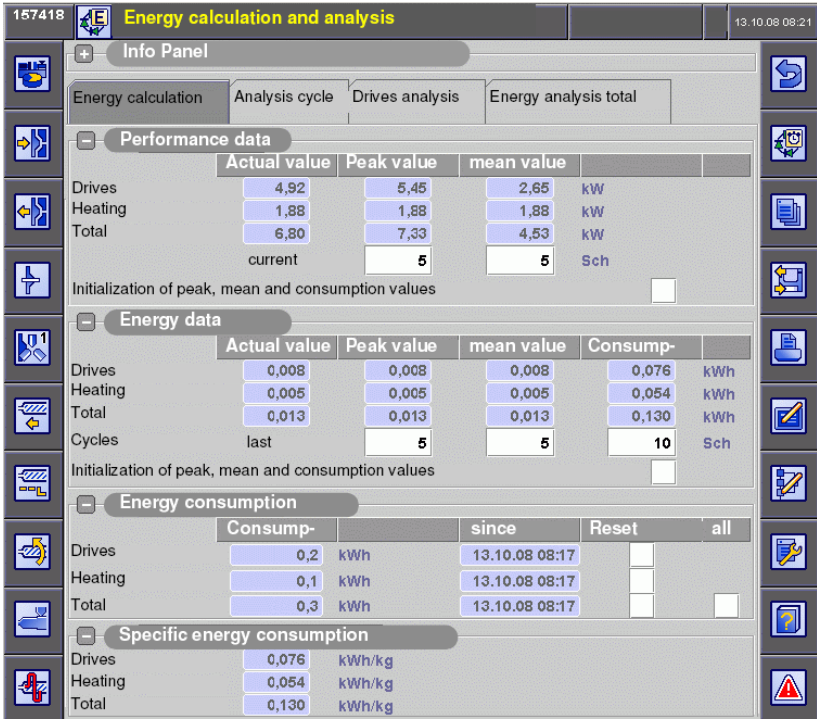
Press release



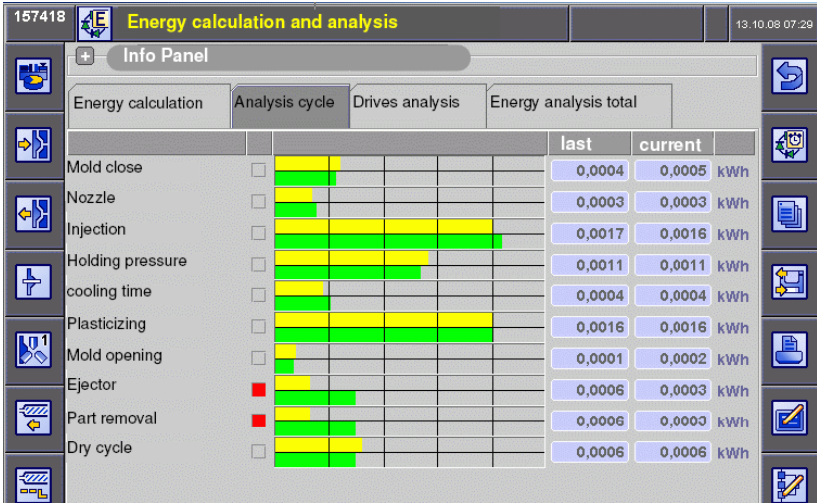
ENGEL emax 110 medical_mold.jpg



ENGEL emax 110 medical_pipette.jpg



CC200 energy calculation_energy calculation.bmp



CC200 energy calculation_analysis cycle.bmp