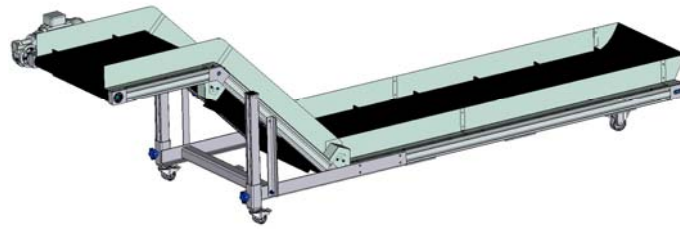


# ENGEL CONVEYING SYSTEM Förderband: ZFB60 – BS, BRS



**Anmerkung: Bestellangaben siehe Bestellformular**

**Standardausführung:**

- Förderband für Engel – Maschinen
- Bandkörper aus Aluminiumprofilsystem
- Untergestell aus Stahlprofilen
- Lenkrolle mit Bremse und Bockrolle für leichteren Transport
- Motor 0,12 kW – 6m/min
- Motoranlage auf Profil, Klemmkasten unten
- PVC Gurt: Schwarz, 80°C, Stollenhöhe 35 mm, Stollenabstand 300 mm
- Führungsbleche Niro H=100 mm
- 6m – Kabel mit Stecker
- Verstellbar ± 5°
- Max. Fördergewicht: 30 Kg
- Max. Teilgewicht: 0,1 Kg
- Motorschutzschalter

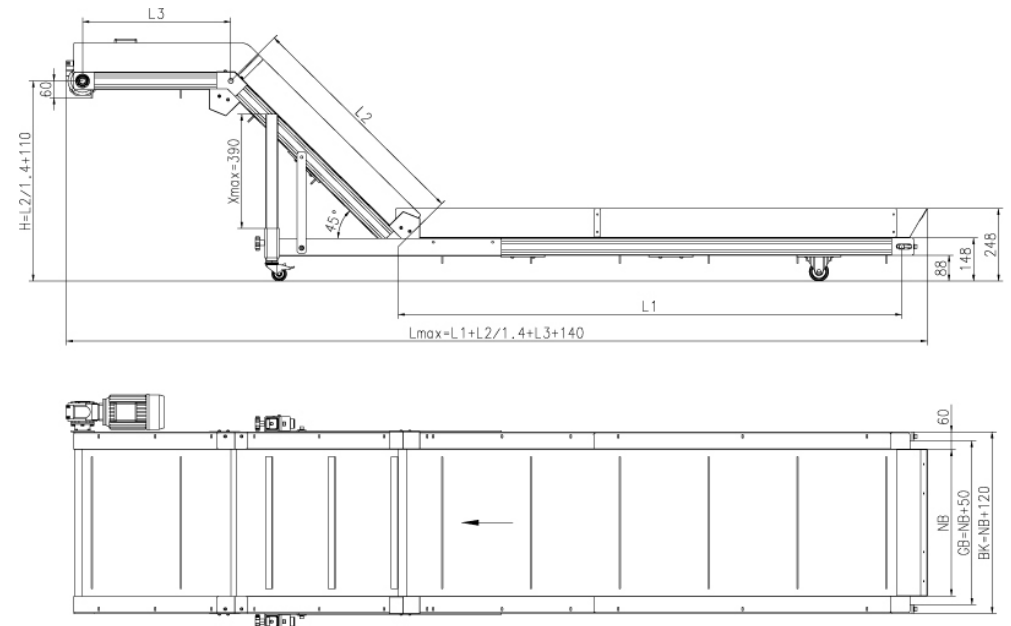
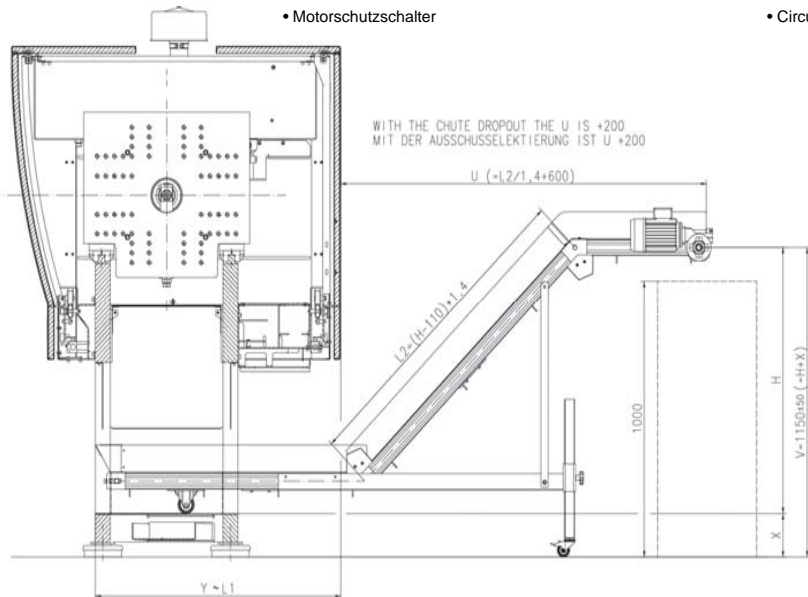
**Note: For order specification see order form**

**Standard type:**

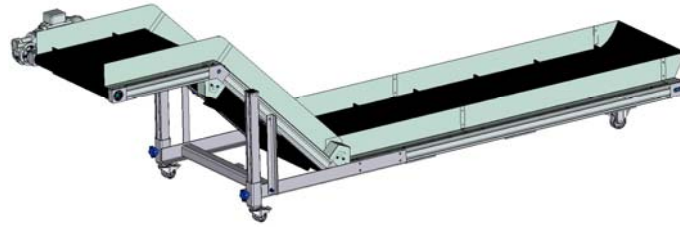
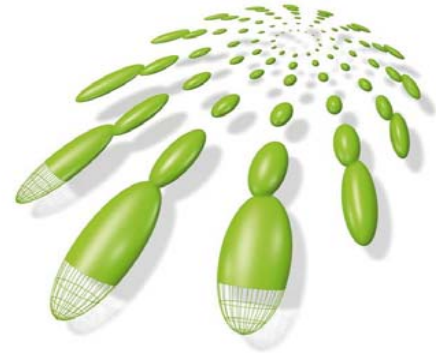
- Conveyor for Engel machines
- Main frame out of aluminium extrusions
- Base frame in solid steel design
- Guide with brake and control roller for easy transport
- Engine 0,12 kW – 6m/min
- Motor at the profile, Terminal box underneath
- PVC band: Black, 80°C, Height of profiles 35 mm, Spacing between profiles 300 mm
- Deflector stainless steel H=100 mm
- 6m cabel with connector
- Setting ± 5°
- Max. conveying load 30 Kg
- Max. part weight: 0,1 Kg
- Circuit - breaker

## ZFB60-BS,BRS

MASCHINE	BK	NB	GB	L1	L2	L3	U	X
VC */28, 40, 50	620	500	550	900	1200	500	1500	129-142
VC */60, 70, 80	670	550	600	1000	1200	500	1500	157-172
VC */90, 110, 120	670	550	600	1100	1200	500	1500	154-169
VC */130, 150	670	550	600	1200	1200	500	1500	159-174
VC */180, 200, 220	670	550	600	1300	1100	500	1430	196-211
VC */260, 300	670	550	600	1500	1100	500	1430	229-244
VC */350, 400	670	550	600	1600	1100	500	1430	240-257
EM */55	670	550	600	1100	1200	500	1500	159-174
EM */100	670	550	600	1200	1200	500	1500	159-174
EM */150, 180	670	550	600	1400	1200	500	1500	159-174
EM */100T	670	550	600	1200	1200	500	1500	157-172
EM */180T	670	550	600	1300	1200	500	1500	163-187
EM */180T WP	670	550	600	1400	1200	500	1500	163-187
EM */225T	670	550	600	1300	1200	500	1500	159-174
EM */280T	670	550	600	1500	1200	500	1500	163-187
EM */280T WP	670	550	600	1500	1200	500	1500	163-187
EM */380T	670	550	600	1700	1200	500	1500	163-187
EM */500T	670	550	600	2000	1400	500	1640	0
E-MAX */50	620	500	550	900	1200	500	1500	154-169
E-MAX */100	670	550	600	900	1200	500	1500	157-172
E-MAX */180	670	550	600	1000	1200	500	1500	157-172
SPEED 180	670	550	600	1300	1200	500	1500	165-184
SPEED 180 WP	670	550	600	1400	1200	500	1500	168-192
SPEED 280	670	550	600	1500	1200	500	1500	163-187
SPEED 280 WP	670	550	600	1500	1200	500	1500	163-187
SPEED 380	670	550	600	1700	1200	500	1500	163-187
SPEED 500	670	550	600	2000	1400	500	1640	0
ELAST */90, 110, 120 VC	670	550	600	1100	1200	500	1500	154-169
ELAST */130, 150 VC	670	550	600	1300	1200	500	1500	159-174
ELAST */180, 200, 220 VC	670	550	600	1400	1200	500	1500	199-214
ELAST */260, 300 VC	670	550	600	1600	1100	500	1430	229-244



# ENGEL CONVEYING SYSTEM Förderband: ZFB60 – STS



**Anmerkung: Bestellangaben siehe Bestellformular**

**Standardausführung:**

- Förderband für Engel – Maschinen
- Bandkörper aus Aluminiumprofilsystem
- Untergestell aus Stahlprofilen
- Lenkrolle mit Bremse und Bockrolle für leichteren Transport
- Motor 0,12 kW - 6m/min
- Motoranlage auf Profil, Klemmkasten unten
- PVC Gurt: Schwarz, 80°C, Stollenhöhe 35 mm, Stollenabstand 300 mm
- Führungsbleche Niro H=100 mm
- 6m – Kabel mit Stecker
- Verstellbar ± 5°
- Max. Fördergewicht: 30 Kg
- Max. Teilgewicht: 0,1 Kg
- Motorschutzschalter

**Note: For order specification see order form**

**Standard type:**

- Conveyor for Engel machines
- Main frame out of aluminium extrusions
- Base frame in solid steel design
- Guide with brake and control roller for easy transport
- Engine 0,12 kW – 6m/min
- Motor at the profile, Terminal box underneath
- PVC band: Black, 80°C, Height of profiles 35 mm, Spacing between profiles 300 mm
- Deflector stainless steel H=100 mm
- 6m cabel with connector
- Setting ± 5°
- Max. conveying load 30 Kg
- Max. part weight: 0,1 Kg
- Circuit - breaker

## ZFB60-STS

MASCHINE	BK	NB	GB	L1	L2	L3	U	X
VC */28, 40, 50	370	250	300	1600	1200	500	1500	129-142
VC */60, 70, 80	420	300	350	1900	1200	500	1500	157-172
VC */90, 110, 120	470	300	400	2300	1200	500	1500	154-169
VC */130, 150	520	400	450	2700	1200	500	1500	159-174
VC */180, 200, 220	570	450	500	3200	1100	500	1430	196-211
VC */260, 300	670	550	600	3700	1100	500	1430	229-244
VC */350, 400	670	550	600	4000	1100	500	1430	240-257
EM */55	520	400	450	1900	1200	500	1500	159-174
EM */100	570	450	500	2400	1200	500	1500	159-174
EM */150, 180	670	550	600	2900	1200	500	1500	159-174
EM */100T	470	350	400	2400	1200	500	1500	157-172
EM */180T	570	450	500	2800	1200	500	1500	163-187
EM */180T WP	570	450	500	3000	1200	500	1500	163-187
EM */225T	670	550	600	3300	1200	500	1500	159-174
EM */280T	670	550	600	3400	1200	500	1500	163-187
EM */280T WP	670	550	600	3400	1200	500	1500	163-187
EM */380T	670	550	600	4100	1200	500	1500	163-187
EM */500T	670	550	600	4700	1200	500	1500	160-184
E-MAX */50	470	350	400	1700	1200	500	1500	154-169
E-MAX */100	470	350	400	2000	1200	500	1500	157-172
E-MAX */180	570	450	500	3000	1200	500	1500	157-172
SPEED 180	570	450	500	2800	1200	500	1500	165-184
SPEED 180 WP	570	450	500	3000	1200	500	1500	168-192
SPEED 280	670	550	600	3400	1200	500	1500	163-187
SPEED 280 WP	670	550	600	3400	1200	500	1500	163-187
SPEED 380	670	550	600	4100	1200	500	1500	163-187
SPEED 500	670	550	600	4700	1200	500	1500	160-184
ELAST */90, 110, 120 VC	520	400	450	2300	1200	500	1500	154-169
ELAST */130, 150 VC	620	500	550	2700	1200	500	1500	159-174
ELAST */180, 200, 220 VC	670	550	600	3200	1200	500	1500	199-214
ELAST */260, 300 VC	670	550	600	3700	1100	500	1430	229-244

**!\* SONDER UNTERGESTELL**

